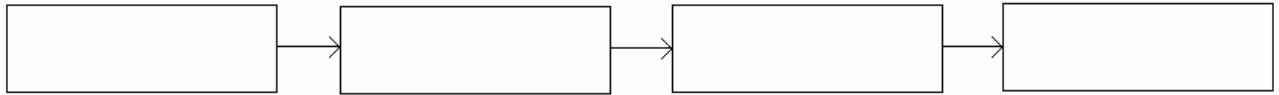


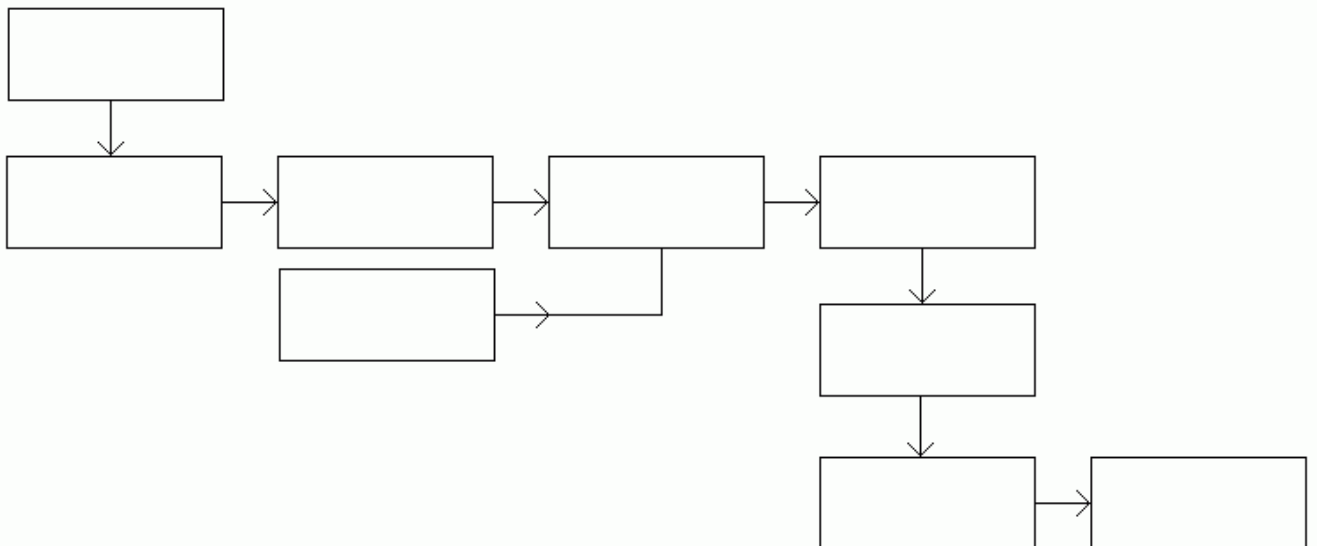
A2 Receivers Test

Your Name:

1. The ability to receive weak signals is called _____.
2. The ability to separate the wanted signal from others on nearby channels is called _____.
3. Complete this system diagram for the simple receiver.



4. Complete this system diagram for the superhet receiver.



5. Which subsystem provides most of the selectivity?
6. If the I.F. is on 455kHz and the transmission is on 1000kHz, what two local oscillator frequencies could be used?
7. Which superhet subsystem prevents the reception of the image frequency or second channel?
8. What feature of the I.F. filtering enables it to be mass produced at low cost?
9. Add to the system diagram above to show the negative feedback used for automatic gain control.

20 Marks.